



FLENDER SERVICE

FLENDER REMOTE EXPERT: SERVICE FOR MINIMUM DOWNTIME

The new tool to provide support while off site.

Features



Plus even more...

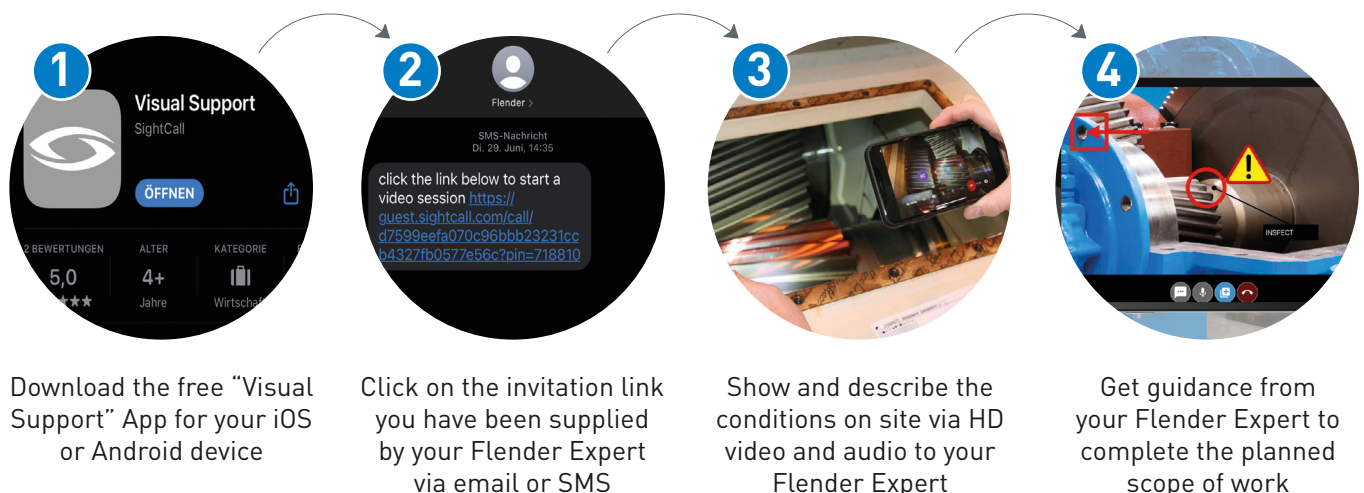
OCR tool to quickly scan relevant text information

Integrated Barcode- and QR-Code Scanner

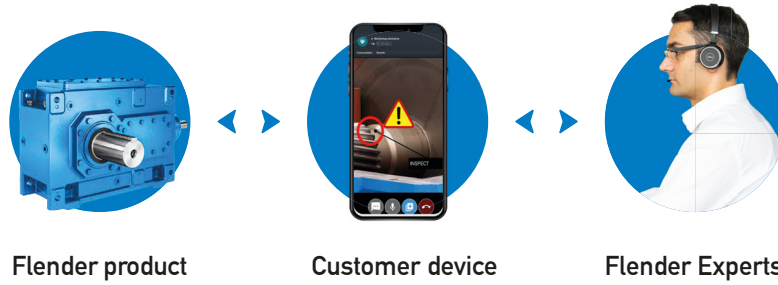
Low bandwidth requirements to ensure stable industrial use

Multi-Party function to add up to eight participants within a call

How to use



Your Benefits



Ability for you to be supported by Flender despite travel limitations



A flexible option for you to contact Flender anytime, anywhere



Fast response time as no physical travel is required



Focused diagnosis and collaboration by our regional expert teams

Requirements

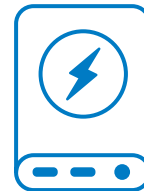
Low level basic requirements to start the call



Mobile device with latest Android or iOS operating system



A good and stable connectivity via WiFi or mobile network (4G/5G)



Required hardware for a smooth operation (e.g. Headset, Powerbank)

Suitability

The applicability of digital service consulting will vary depending on the type of gear unit and the skill level of the technician.

LESS SUITABLE

SUITABLE

MOST SUITABLE

Repair work

Installation
Commissioning
Maintenance work

Approval test
Visual inspection
Condition assessment



Flender International GmbH

Alfred-Flender-Straße 77
46395 Bocholt
Germany

Article No.: FLEX-B10137-00-7600

Printed in Germany

Dispo 27904

WÜ BR 02222.0

The information provided in this catalog contains descriptions or characteristics of performance which in case of actual use do not always apply as described or which may change as a result of further development of the products. An obligation to provide the respective characteristics shall only exist if expressly agreed in the terms of contract. Availability and technical specifications are subject to change without notice.

All product designations may be trademarks or product names of Flender or supplier companies whose use by third parties for their own purposes could violate the rights of the owners.